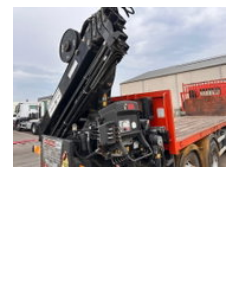
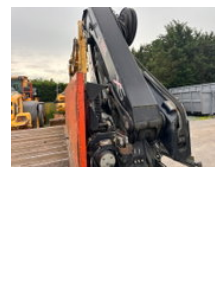
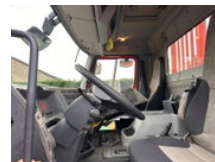


Renault Lander 380 DXI

General characteristics

Brand	Renault
Model	Lander 380
Subcategory	Crane truck
Meter reading	259.000km
Year of construction	2011
Condition	Used
Reference	6916



Renault Lander 380 DXI

Technical specifications

Number of axes	4
----------------	---

Axis configuration	8x2
--------------------	-----

Accessories